

Build Touch Driver with Windows CE 5.0

(2005/12/27, 2007/1/9, 2007/5/22)

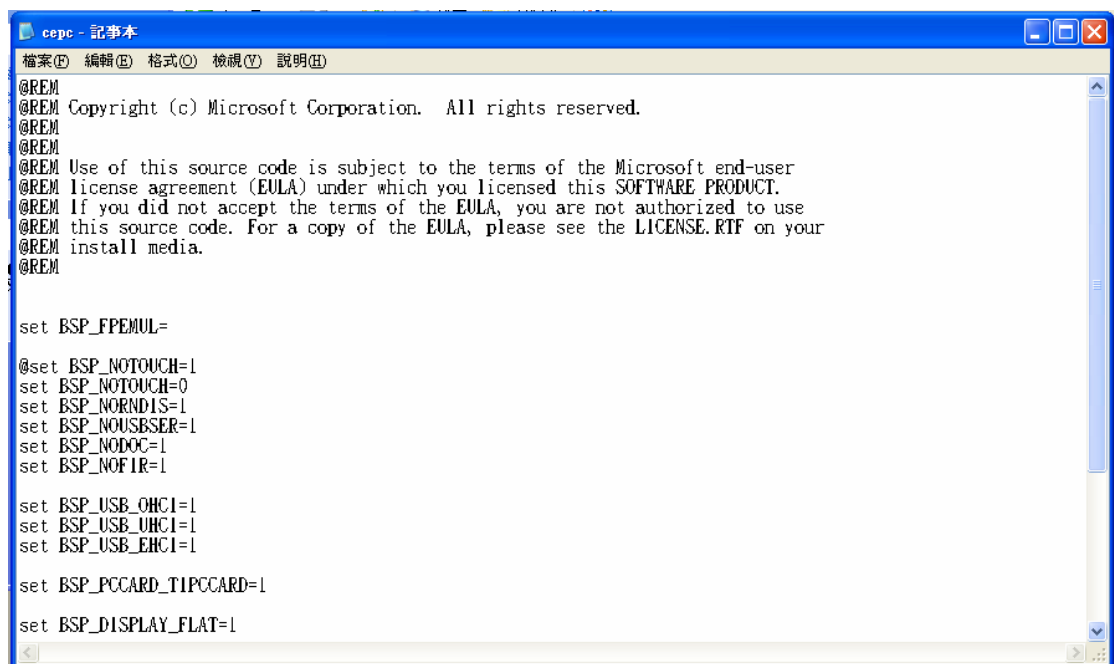
1. Our USB/232 touch controller can work under Windows CE 5.0 and old CE 4.X

About build drivers process please reference as below

2. Add drivers and registry into your platform

- (1) Set the environment variable

Open \WINCE500\PLATFORM\CEPC\CEPC.BAT , and change the value of variable "BSP_NOTOUCH" to "0".



```
@REM
@REM Copyright (c) Microsoft Corporation. All rights reserved.
@REM
@REM
@REM Use of this source code is subject to the terms of the Microsoft end-user
@REM license agreement (EULA) under which you licensed this SOFTWARE PRODUCT.
@REM If you did not accept the terms of the EULA, you are not authorized to use
@REM this source code. For a copy of the EULA, please see the LICENSE.RTF on your
@REM install media.
@REM

set BSP_FPEMUL=

@set BSP_NOTOUCH=1
set BSP_NOTOUCH=0
set BSP_NORNDIS=1
set BSP_NOUSBSER=1
set BSP_NODOC=1
set BSP_NOFIR=1

set BSP_USB_OHCI=1
set BSP_USB_UHCI=1
set BSP_USB_EHCI=1

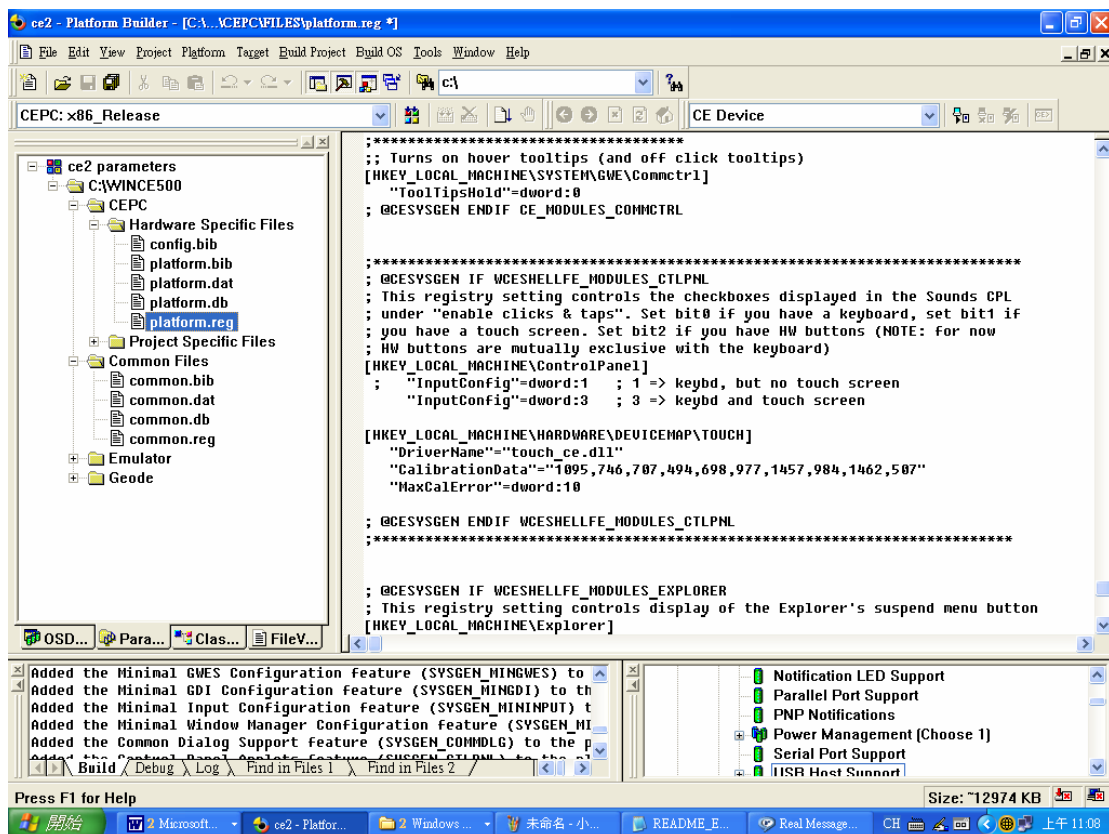
set BSP_PCCARD_TIPCCARD=1

set BSP_DISPLAY_FLAT=1
```

- (2) Add OS Design from Catalog\Device Drivers

- Catalog\Device Drivers\Serial\Com16550
- Catalog\Core OS\Display based devices\Core OS Services\
Serial Port Support
- Catalog\Core OS\Display based devices\Shell and User Interface\
User Interface\Mouse
- Catalog\Core OS\Display based devices\Shell and User Interface\
User Interface\Touch Display (Stylus)
- Catalog\Device Drivers\USB Host\USB Host Controllers\EHCI
- Catalog\Core OS\Display based devices\Core OS Services\
USB Host Support\USB Human Input Device (HID) Class Driver

(3) Edit \WINCE500\CEPC\Hardware Specific Files\platform.reg



[HKEY_LOCAL_MACHINE\Drivers\HID\LoadClients\1636\Default\Default\ETouch]

"DLL"="USBHID_CE.DLL"

[HKEY_LOCAL_MACHINE\Drivers\HID\ClientDrivers\ETouch]

"DLL"="USBHID_CE.DLL"

[HKEY_LOCAL_MACHINE\HARDWARE\DEVICEMAP\TOUCH]

"DriverName"="Touch_CE.dll"

"CalibrationData"="2161,2497 701,1418 693,3573 3542,3545 3516,1399"

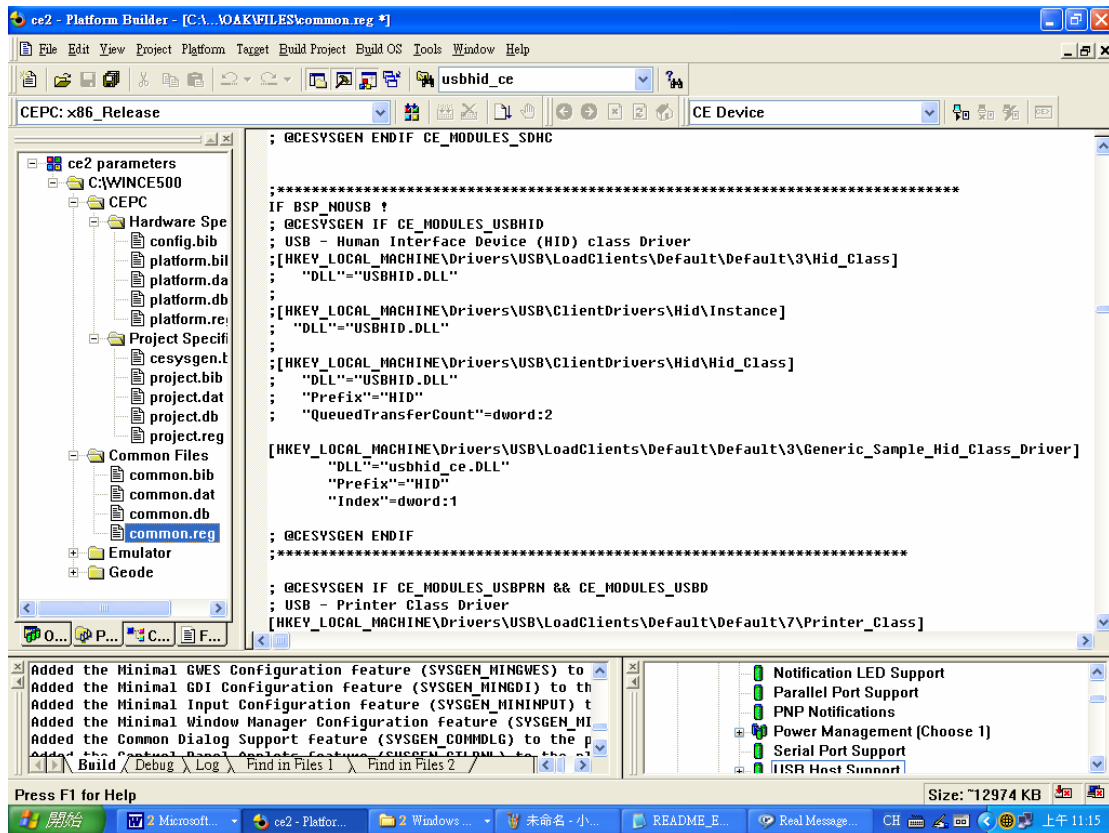
"MaxCalError"=dword:10

[HKEY_LOCAL_MACHINE\Drivers\BuiltIn\Touch]

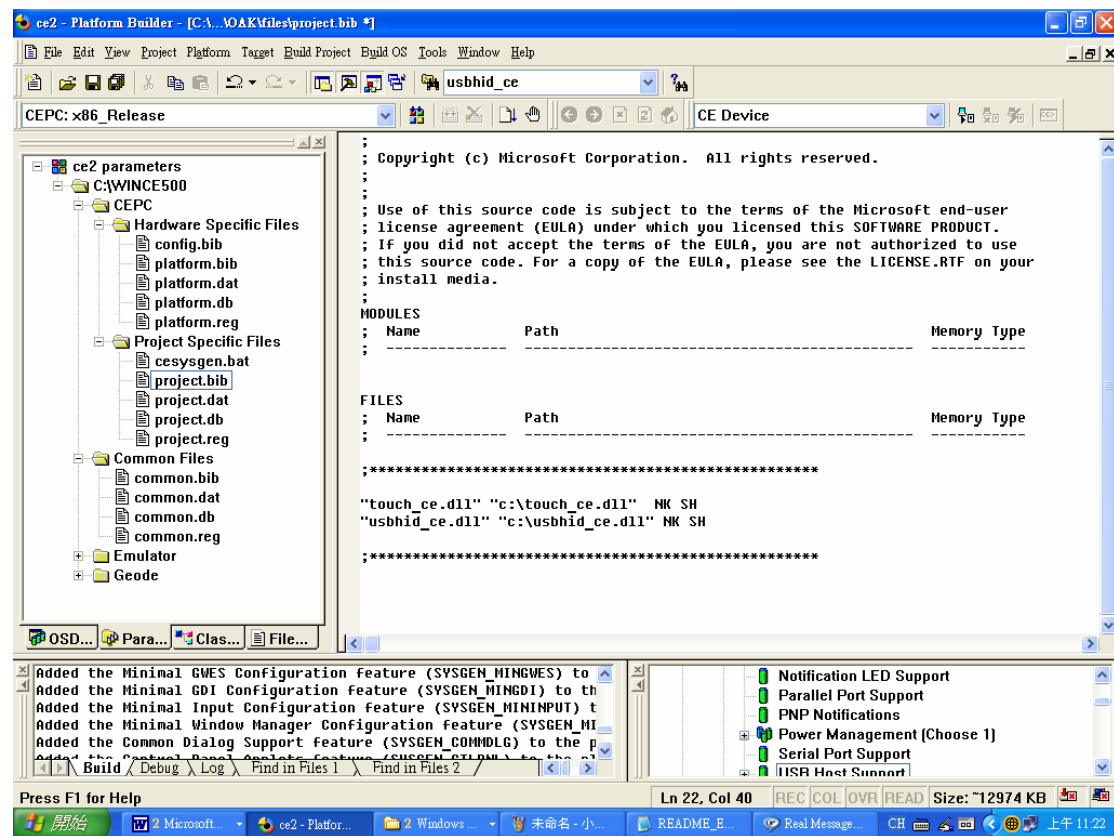
"Priority256"=dword:f0

"HighPriority256"=dword:f0

(4) Edit \WINCE500\Common Files\common.reg (for WinCE 4.0 only)



(5)Edit \WINCE500\CEPC\Project Specific Files\project.bib



```
"touch_ce.dll" "C:\touch_ce.dll" NK SH
```

```
"usbhid_ce.dll" "C:\usbhid_ce.dll" NK SH
```

If specify c:\usbhid_ce.dll, you need put usbhid_ce.dll file into c:\ .

3. Build and Sysgen your OS image. Download OS image to your CE platform.
4. Plug usb or 232 touch controller and Startup your CE platform.
5. Click \Control Panel\Stylus to recalibration before use touch screen.