

TM Printer Print Support Library Manual

Overview

Descriptions of the TM Printer Print Support Library features.

Installation

Descriptions of install.

Using the Print Support Library

Descriptions of how to use the Print Support Library.

Cautions

- No part of this document may be reproduced, stored in a retrieval system, or transmitted in any form or by any means, electronic, mechanical, photocopying, recording, or otherwise, without the prior written permission of Seiko Epson Corporation.
- The contents of this document are subject to change without notice. Please contact us for the latest information.
- While every precaution has taken in the preparation of this document, Seiko Epson Corporation assumes no responsibility for errors or omissions.
- Neither is any liability assumed for damages resulting from the use of the information contained herein.
- Neither Seiko Epson Corporation nor its affiliates shall be liable to the purchaser of this product or third parties for damages, losses, costs, or expenses incurred by the purchaser or third parties as a result of: accident, misuse, or abuse of this product or unauthorized modifications, repairs, or alterations to this product, or (excluding the U.S.) failure to strictly comply with Seiko Epson Corporation's operating and maintenance instructions.
- Seiko Epson Corporation shall not be liable against any damages or problems arising from the use of any options or any consumable products other than those designated as Original EPSON Products or EPSON Approved Products by Seiko Epson Corporation.

Trademarks

EPSON® and ESC/POS® are registered trademarks of Seiko Epson Corporation in the U.S. and other countries.



Apple®, Mac®, Macintosh®, Mac OS®, and OS X® are registered trademarks of Apple Inc.

Copyright © 2010-2013 Seiko Epson Corporation. All rights reserved.

For Safety

Key to Symbols

The symbols in this manual are identified by their level of importance, as defined below. Read the following carefully before handling the product.

	Provides information that must be observed to avoid damage to your equipment or a malfunction.
	Provides important information and useful tips.

Restriction of Use

When this product is used for applications requiring high reliability/safety such as transportation devices related to aviation, rail, marine, automotive etc.; disaster prevention devices; various safety devices etc; or functional/precision devices etc, you should use this product only after giving consideration to including fail-safes and redundancies into your design to maintain safety and total system reliability. Because this product was not intended for use in applications requiring extremely high reliability/safety such as aerospace equipment, main communication equipment, nuclear power control equipment, or medical equipment related to direct medical care etc, please make your own judgment on this product's suitability after a full evaluation.

About this Manual

Purpose of this manual

This manual has been created for the purpose of providing information necessary for use of the TM Printer Print Support Library.

Manual Configuration

This manual is composed as follows:

- Chapter 1 [Overview](#)
- Chapter 2 [Installation](#)
- Chapter 3 [Using the Print Support Library](#)

Contents

■ For Safety	3
Key to Symbols	3
■ Restriction of Use	3
■ About this Manual	4
Purpose of this manual.....	4
Manual Configuration	4
■ Contents	5

Overview 7

■ System Overview	7
■ Package Components.....	7
■ Operating Environment.....	7
■ Supported Models	7

Installation 9

■ Installing the Print Support Library.....	9
Installing	9

Using the Print Support Library 13

■ Print Support Library API.....	13
API specification	13
■ Sample application.....	16
Compile environment	16
Compile procedure.....	16
TMSDKSample screen.....	16
■ Sample source	18
Sample data print.....	18
Empty data print (When “Empty data is sent” is selected)	18



Overview

This chapter describes the package components and operating environment of the TM Printer Print Support Library.

System Overview

The TM Printer Print Support Library is a library for the purpose of supporting the print settings of the EPSON TM printer. By setting parameters for this library, print settings can be executed without displaying the print dialog.

Package Components

TMPrintSupportLibrary_xxx.pkg: TM Printer Print Support Library Installer

Operating Environment

Mac OS X 10.5.8

Mac OS X 10.6.8

Mac OS X 10.7.5

Mac OS X 10.8.2

Supported Models

The following models are supported by the TM Printer Print Support Library:

- TM-T20
- TM-T20II
- TM-T70II
- TM-T82
- TM-T82II
- TM-T88V



Installation

This chapter describes the procedures for installing the Print Support Library.



- This chapter shows the screens of Mac OS X 10.5. If you are using a different version of the Mac OS, proceed as appropriate for the screens in your version.
- To use this library to print, a TM driver must be installed and the printer must be registered.

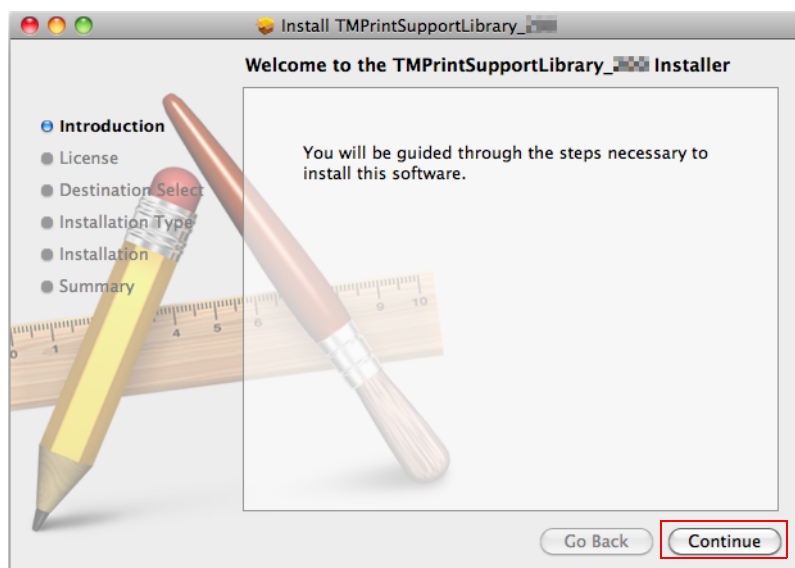


To install the Print Support Library, the "Name" and "Password" of the administrator are required.

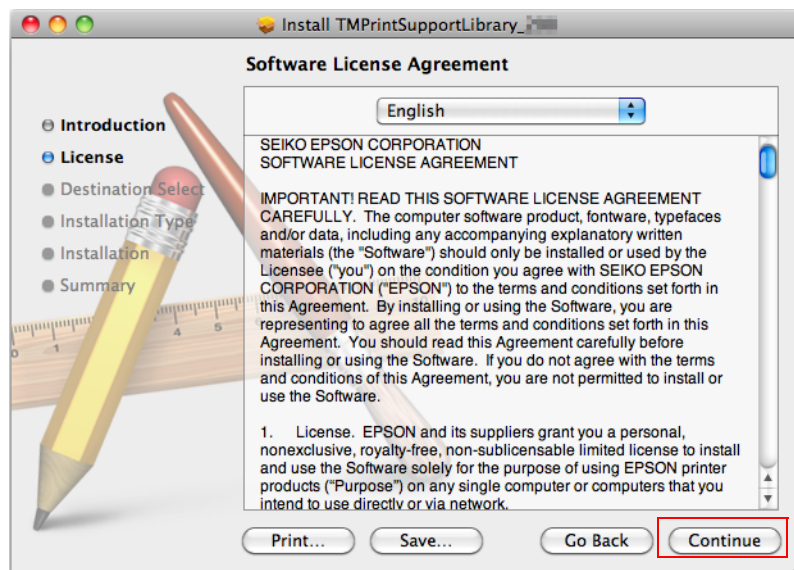
Installing the Print Support Library

Installing

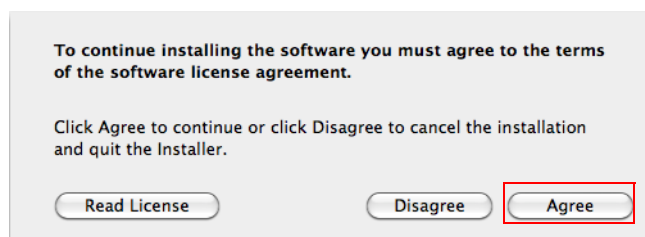
- 1 Click "TMPrintSupportLibrary_xxx.pkg" in the location where you saved it. Double-click "TMPrintSupportLibrary_xxx.pkg" to start the installer.
- 2 The "Welcome to the TMLPrintSupportLibrary_xxx Installer" screen appears. Click the "Continue" button.



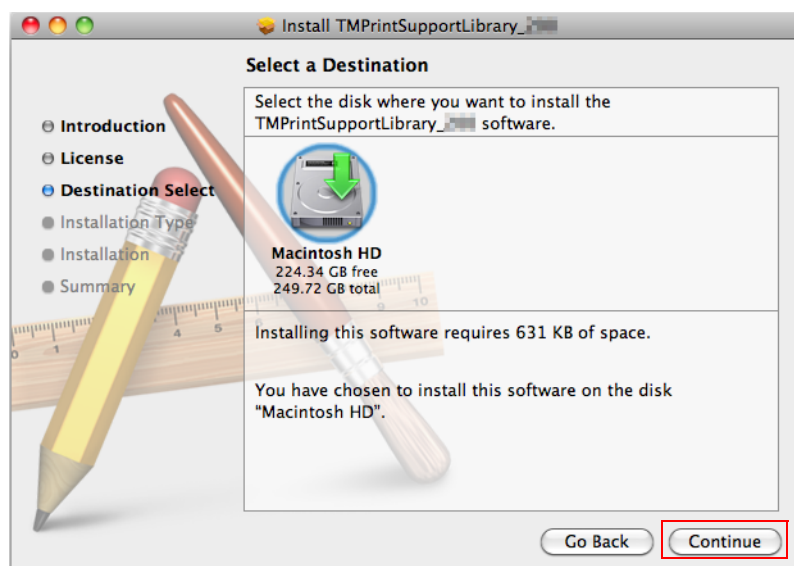
- 3 The "Software License Agreement" screen appears. Check the contents and click the "Continue" button.



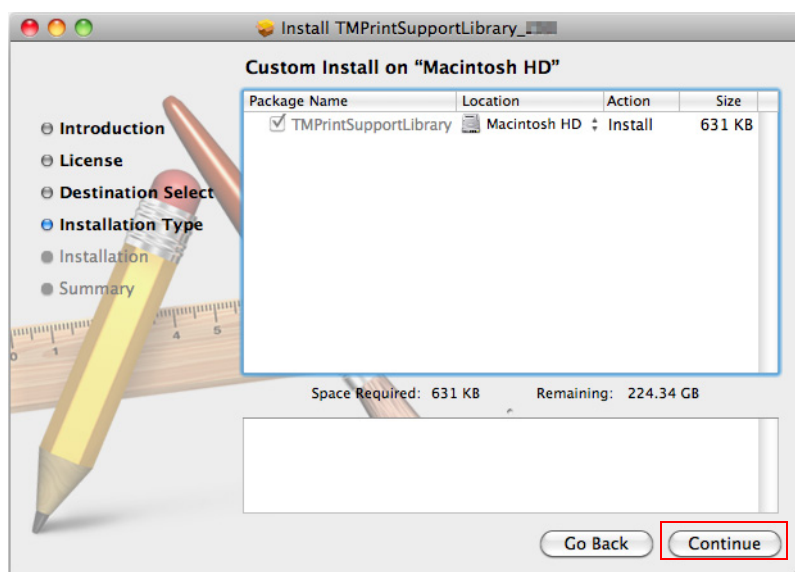
- 4 The license agreement confirmation message appears. Click the "Agree" button.



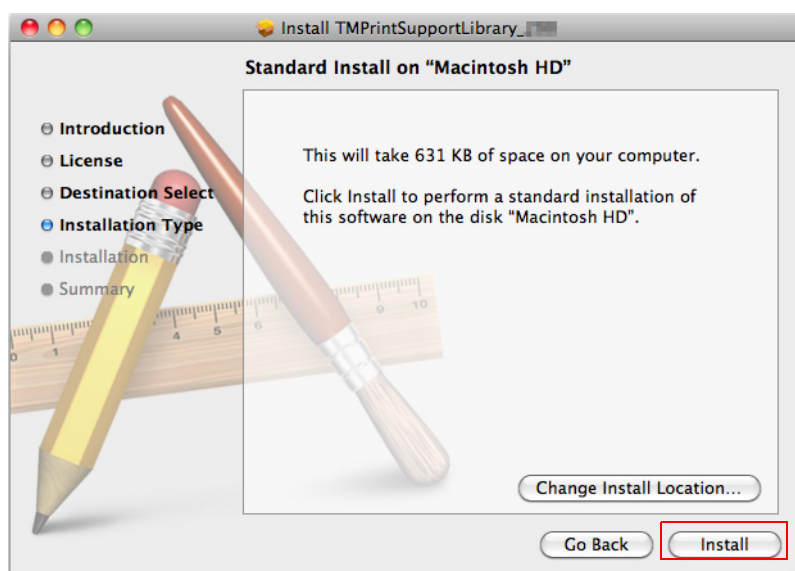
- 5 The "Select a Destination" screen appears. Click the "Continue" button.



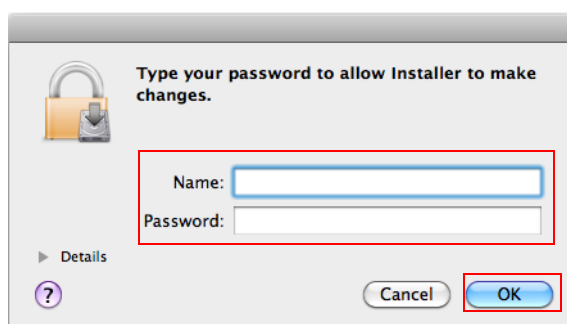
- 6 The "Custom Install on "Macintosh HD"" screen appears. Click the "Continue" button.



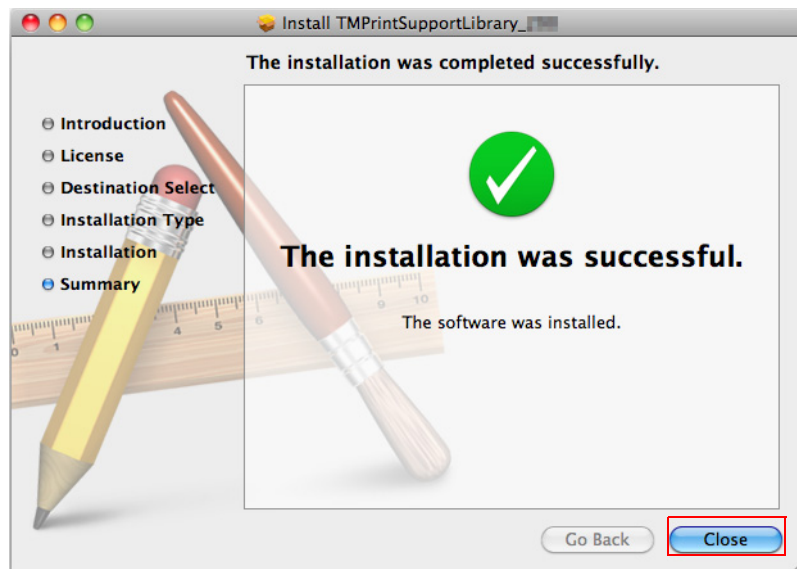
- 7 The "Standard Install on "Macintosh HD"" screen appears. Click the "Install" button.



- 8 The OS administrator authentication screen appears. Enter a "Name" and "Password" and click the "OK" button.



- 9 The "The Installation was completed successfully." screen appears. Click the "Close" button.



This completes the installation of the Print Support Library.

Using the Print Support Library

This chapter explains how to use the Print Support Library.



This chapter shows the screens of Mac OS X 10.5.

If you are using a different version of the Mac OS, proceed as appropriate for the screens in your version.

To use the library, create the applications in the following configuration:

xxxxx/framework/TMPrintSupportLibrary.framework This library

xxxxx/yyyyyyyyyy/zzzzz.xcodeproj Application's project

Bundle the library in the application. For the setting procedure, see the project settings in the sample application. A header file is bundled in the library.

TMPrintSupportLibrary.framework/Versions/A/Headers/TMPrintSupport.h

Print Support Library API

API specification

Prototype
<pre> +(OSStatus) TMSetJobTicket:(NSPrintInfo*)iPrinterInfo PrinterName:(NSString*)iPrinterName documentSize:(NSSize)iDocumentSize resolution:(NSString*)iResolution speed:(NSString*)iPrintSpeed blank:(NSString*)iPageBlank paperCut:(NSString*)iPaperCutType chashDrwr1:(NSString*)iChashDrawer1 chashDrwr2:(NSString*)iChashDrawer2 buzzerControl:(NSString*)iBuzzerControl buzzerPattern:(NSString*)iBuzzerPattern buzzerRepeat:(NSString*)iBuzzerRepeat </pre>
Description
Sets the information that is set in the parameters in printerInfo.

Arguments	
<i>iPrinterInfo</i>	Sets the printer information.
<i>iPrinterName</i>	Sets the printer name.
<i>iDocumentSize</i>	Sets the paper size "TMTicketPageSize_0" = "RP80x297"; "TMTicketPageSize_1" = "RP58x297";
<i>iResolution</i>	Sets the resolution "TMTicketResolution_1" = "180x180dpi"; "TMTicketResolution_2" = "203x203dpi";
<i>iPrintSpeed</i>	Sets the print speed. "TMTicketPrintSpeed_1" = "Auto"; "TMTicketPrintSpeed_2" = "1"; "TMTicketPrintSpeed_3" = "2"; "TMTicketPrintSpeed_4" = "3"; "TMTicketPrintSpeed_5" = "4";
<i>iPageBlank</i>	Sets blank page saving. "TMTicketBlankLineSkip_1" = "Off"; "TMTicketBlankLineSkip_2" = "Top"; "TMTicketBlankLineSkip_3" = "Bottom"; "TMTicketBlankLineSkip_4" = "Both";
<i>iPaperCutType</i>	Sets the page cutting type. "TMTicketCutType_1" = "DocFeedCut"; "TMTicketCutType_2" = "DocFeedNoCut"; "TMTicketCutType_3" = "DocNoFeedCut"; "TMTicketCutType_4" = "DocNoFeedNoCut"; "TMTicketCutType_5" = "PageFeedCut"; "TMTicketCutType_6" = "PageFeedNoCut"; "TMTicketCutType_7" = "PageNoFeedCut";
<i>iCashDrawer1</i>	Specifies the open setting of the cash drawer 1 output destination. "TMTicketCashDrawer1_1" = "Off"; "TMTicketCashDrawer1_2" = "Before"; "TMTicketCashDrawer1_3" = "After";
<i>iCashDrawer2</i>	Specifies the open setting of the cash drawer 2 output destination. "TMTicketCashDrawer2_1" = "Off"; "TMTicketCashDrawer2_2" = "Before"; "TMTicketCashDrawer2_3" = "After";
<i>iBuzzerControl</i>	Sets Buzzer Control. "TMTicketBuzzerControl_1" = "Off"; "TMTicketBuzzerControl_2" = "Before"; "TMTicketBuzzerControl_3" = "After";

<i>iBuzzerPattern</i>	Sets Buzzer Pattern.
"TMTicketBuzzerPattern_1" = "Internal"; "TMTicketBuzzerPattern_2" = "A"; "TMTicketBuzzerPattern_3" = "B"; "TMTicketBuzzerPattern_4" = "C"; "TMTicketBuzzerPattern_5" = "D"; "TMTicketBuzzerPattern_6" = "E";	
<i>iBuzzerRepeat</i>	Sets Buzzer Repeat.
"TMTicketBuzzerRepeat_1" = "1"; "TMTicketBuzzerRepeat_2" = "2"; "TMTicketBuzzerRepeat_3" = "3"; "TMTicketBuzzerRepeat_4" = "5";	
Return	
0	Normal end
-1	Printer information not correct (cannot find printer)
-2	Invalid parameter value
-3	Abnormal ticket information

Prototype	
+(CFStringRef) TMSetEmptyData:((NSString*)iPrinterName	
Description	
Sends empty data to the printer Use this when sending only the user definition file.	
Arguments	
<i>iPrinterName</i>	Sets the printer name (queue name).
Return	
Error code	

Sample application

Compile environment

- ❑ OS: 10.5.8
- ❑ Compiler: XCode3.1

Compile procedure

Start the installed “TMSDKSample.xcodeproj” in the SampleSources folder using XCode.



To build the sample application, administrator authority is required.

TMSDKSample screen

Item	Description	Remarks
Printer	Displays the printer name.	Displays the TM printer list registered in the print and fax screen. When no printers are registered, the list is blank and only the (Cancel) button can be selected.
Page Size	Displays the paper size.	-

Item	Description	Remarks
Empty data is sent	Sends empty data.	When it is ON, the buttons other than (Print) and (Cancel) cannot be selected.
Sample Data	Displays sample data sent to the printer.	-
Resolution	Sets the resolution.	-
Printing Speed	Sets the printing speed.	-
Paper Reduction	Sets saving of blank parts of pages.	-
Cash Drawer #1	Specifies the open setting of the cash drawer 1 output destination.	-
Cash Drawer #2	Specifies the open setting of the cash drawer 2 output destination.	-
Buzzer Control	Sets the buzzer control.	-
Sound Pattern	Sets the buzzer sound pattern.	-
Buzzer Repeat	Sets the number of buzzer repeats.	-
Cancel	Quits the application without printing.	-
Print	Starts printing.	-

* Immediately after startup, displays the default values of the Basic Settings, Cash Drawer Settings, and Buzzer Settings.

Sample source

When the Print button of the TMSDKSample application is pressed, the following processing is performed.



In "xxx", specify the queue name of the environment you are using.

Sample data print

```
OSStatus          err = noErr;
NSPrintInfo       *printInfo = [NSPrintInfo sharedPrintInfo];
NSView            *view;

err = [TMPrintSupport TMSetJobTicket:printInfo
      printerName:@"xxx"
      documentSize:NSMakeSize(204.0, 841.8)
      resolution:@"180x180dpi"
      speed:@"1"
      blank: @"Off"
      paperCut: @"DocFeedCut"
      chashDrwr1: @"Before"
      chashDrwr2: @"After"
      buzzerControl: @"Off"
      buzzerPattern: @"A"
      buzzerRepeat: @"3"];

NSPrintOperation *printOperation =
    [NSPrintOperation printOperationWithView:view printInfo:printInfo];
[printOperation setCanSpawnSeparateThread:YES];
[printOperation setShowPanels:NO];
[printOperation runOperation];
```

Empty data print (When "Empty data is sent" is selected)

```
OSStatus          err = noErr;

err = [TMPrintSupport TMSetEmptyData:@"xxx"];
```